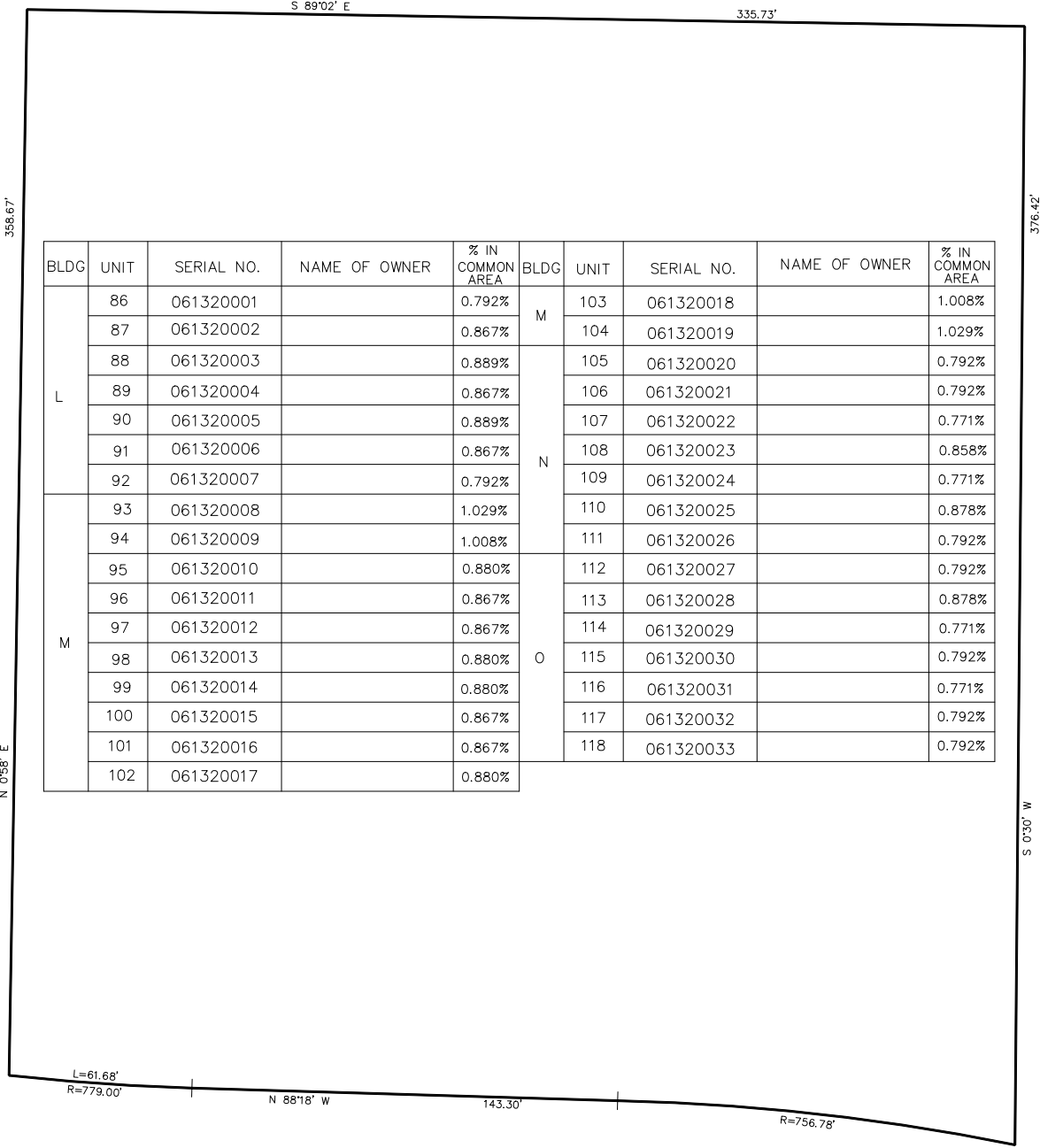


PART OF THE NE 1/4, SEC. 9, T.5N. R.1W., S.L.B. & M.
COUNTRY HILLS MANOR CONDOMINIUM
PHASE NO. 4

IN PART OF BLOCK 11, SOUTH OGDEN PLAT "A"
SURVEY PLAT: BOOK 17 OF DEDICATION PLATS, PAGES 5,6,7
DECLARATION: BOOK 973 OF RECORDS, PAGE 26
IN OGDEN CITY SCALE 1" = 30'

TAXING UNIT: 25

SEE PAGE 128



SEE PAGE 124

SEE PAGE 80

SEE PAGE 80